

# Lighting Technology

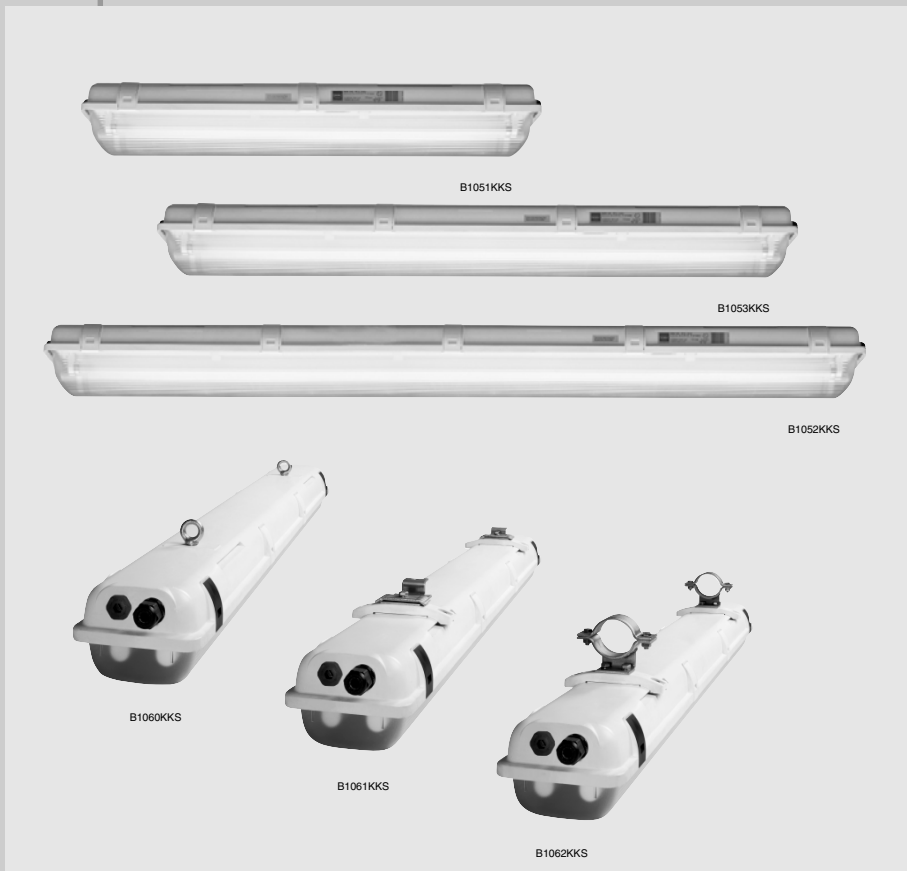


STAHL

Data Sheet

## Light Fitting for Fluorescent Lamps Series ECOLUX 6600/6608

- for explosive gas atmospheres Zone 1 and Zone 2
- for areas with combustible dust Zone 21 and 22



## Light Fitting for Fluorescent Lamps Series 6600/6608

- Explosion protection to GB3836.1, GB3836.3 and GB3836.9  
Useable in Zone 1 & Zone 2 and for areas with combustible dust Zone 21 and Zone 22
- For installation as
  - Pendant light fitting
  - Pole-mounting light fitting
  - Bulkhead light fitting
- With electronic ballast (1- or 2-channel)
- For two pin fluorescent lamps
- 1- or 2-lamp version:  
18 W, 36 W or 58 W
- Enclosure in polyester resin, glass fibre reinforced and cover in polycarbonate, impact-resistant
- Quick fasteners

STAHL

The light fittings series 6600/6608 are useable for normal lighting, but also as group or centrally-supplied emergency light fitting.

# Zone 1&2, Zone 21, Zone 22

# Light Fittings for Fluorescent Lamps for Use in Zone1&2, Zone 21, Zone 22 Series ECOLUX 6600

# 7



Selection table				
Version	Lamps	Electronic ballast	Ordering code	Weight [kg]
<b>Series 6600</b> for use in Zone 2, Zone 21, Zone 22	1 x 18/20 W	1-channel	6600/521-8□□□ - □□□□	2,5
	2 x 18/20 W	1-channel	6600/522-8□□□ - □□□□	2,5
		2-channel	6600/522-9□□□ - □□□□	2,9
	1 x 36/40 W	1-channel	6600/541-8□□□ - □□□□	4,6
	2 x 36/40 W	1-channel	6600/542-8□□□ - □□□□	4,6
		2-channel	6600/542-9□□□ - □□□□	5,0
	1 x 58/65 W	1-channel	6600/561-8□□□ - □□□□	5,8
2 x 58/65 W	1-channel	6600/562-8□□□ - □□□□	5,8	
	2-channel	6600/562-9□□□ - □□□□	6,2	

### Add. to ordering code

Through wiring	Standard: without Special: with 3 cores with 5 cores	6600/□□□-□0 6600/□□□-□3 6600/□□□-□5	↑↑↑
Cable entries	Standard: M25 x 1,5 1 cable entry, 2 plugs Special: M20 or M25 in moulded plastic or metal State with order	6600/□□□-□□1  6600/□□□-□□9	↑↑↑
Switching off when opening light fitting	Standard: without Special: with, switch 8080, 2-pole	6600/□□□-□□□0 6600/□□□-□□□1	↑↑
Electronic ballast	Standard: FBT Special: (For outdoor use) 6442/...	6600/□□□-□□□□- 2  6600/□□□-□□□□- 1	↑↑
Terminals Version	Standard: screw terminals max. 4 mm <sup>2</sup> Special: a) tension clamp terminals max. 2,5 mm <sup>2</sup> b) screw terminals max. 6 mm <sup>2</sup>	6600/□□□-□□□□- □3 6600/□□□-□□□□- □2 6600/□□□-□□□□- □1	↑↑↑
Number of terminals	Standard: 3 (L1, N, PE) Special: 5 (L1, L2, L3, N, PE)	6600/□□□-□□□□- □□3 6600/□□□-□□□□- □□5	↑↑
Address- and monitoring module	Standard: without Special: STAHL 6448/11-02 6448/12-05 INOTEC 6448/11-03 CEAG 6448/11-04	6600/□□□-□□□□- □□□0 6600/□□□-□□□□- □□□1 6600/□□□-□□□□- □□□3 6600/□□□-□□□□- □□□4 6600/□□□-□□□□- □□□6	↑↑↑↑↑

**Note:** The light fittings are supplied without lamps and mounting accessories.  
These parts must be ordered separately!

## Light Fittings for Fluorescent Lamps for Use in Zone 1&2, Zone 21, Zone 22

### Series ECOLUX 6600

Technical data						
Version	With Standard ballasts (ECB) 2-channel			With R. STAHL ballast (ECB) 1- or 2-channel Recommended for outdoor use		
Explosion protection	Ⓔ EEx edm II T4 Zone1 & 2		Ⓔ EEx T 80°C Zone 21*		Ⓔ EEx T 80°C Zone 22*	
	* T 80°C = max. surface temperature referred to 18, 36 W: T <sub>a</sub> = + 50°C 58 W: T <sub>a</sub> = + 45°C					
Test certificate for Zone 1&2 for Zone 21	CQST CNEEx04.025 DMT 01 ATEX E 086X					
Marking	CE					
Lamps	Two pin-fluorescent lamps Ø 26 mm or Ø 38 mm, socket G13 1 x 18 W, 2 x 18 W, 1 x 36 W, 2 x 36 W, 1 x 58 W, 2 x 58 W					
Rated voltage	AC: 198 V ... 254 V 50Hz			AC: 220 V - 10% ... 254 V + 6% 50/60 Hz Option: 110 V - 10% ... 127 V + 15%, 50/60 Hz DC: 198 V - 10% ... 250 V + 10%		
Rated current	at 220 V/50 Hz 1 x 18/20 W 1 x 36/40 W 1 x 58/65 W 0,08 A 0,16 A 0,31 A 2 x 18/20 W 2 x 36/40 W 2 x 58/65 W 0,19 0,34 A 0,50 A			at 230 V/50 Hz 1 x 18/20 W 1 x 36/40 W 1 x 58/65 W 0,1 A 0,18 A 0,25 A 2 x 18/20 W 2 x 36/40 W 2 x 58/65 W 0,18 A 0,33 A 0,49 A		
Power factor cos φ	cos φ = 0,97 capacitive No additional compensation required					
Ambient temperature	- 20 °C ... + 50 °C (18 W / 36 W) - 20 °C ... + 50 °C (+ 45 °C *) (58 W)					
Efficiency of light	Wide beam 1 x 18/20 W 1 x 36/40 W 1 x 58/65 W 80% 80% 80% 2 x 18/20 W 2 x 36/40 W 2 x 58/65 W 74% 74% 74%			Wide beam 1 x 18/20 W 1 x 36/40 W 1 x 58/65 W 80% 80% 80% 2 x 18/20 W 2 x 36/40 W 2 x 58/65 W 74% 74% 74%		
Material	Enclosure Polyester resin, glass fibre reinforced, colour white, similar RAL 9010 Cover Polycarbonate; protective paint possible Gasket Polyurethane-gasket foamed into diffuser Quick fasteners Polyamide, glass fibre reinforced, black/white Mounting parts Polyester resin, glass fibre reinforced, colour white, similar RAL 9010					
Class of protection	I (with internal PE connection terminal)					
Degree of protection	IP 66/IP 67 (EN 60 529)					
Cover fixing	Quick fasteners to open with screw-driver; cover hinged for access.					
Light guides	Standard Wide beam, inside of light fittings painted white. Colour: signal white RAL 9003; prismatic structure for anti-glare in the diffuser sides. Special Additional reflector (easily mounted), broad deep-beam, aluminium anodized and semi-polished.					
Connection	Standard Screw terminals Cable dia. range: 2 x 4 mm <sup>2</sup> (flexible, single core) 3 pole (marking L1 + N+ PE) Special Tension clamp terminals Cable dia. range: max. 2 x 2,5 mm <sup>2</sup> 5 pole (marking L1 + L2 + L3 + N+ PE) or Terminal block with screw terminals cable dia. range: max. 2 x 6 mm <sup>2</sup> (single core); max. 2 x 4 mm <sup>2</sup> (flexible) 3-pole (terminal marking: L1 + N + PE) 5-pole (terminal marking: L1 + L2 + L3 + N + PE)					

# Light Fittings for Fluorescent Lamps for Use in Zone 1&2, Zone 21, Zone 22 Series ECOLUX 6600

# 7

Technical data	(Continuation)
<b>Cable entries</b> Standard:  Special:	1 x compression gland 8161, M25 x 1,5; cable dia. range: 7 ... 17 mm 2 x plugs 8290, M25 x 1,5 Entry parts in moulded plastic (8161/8290): M20 Metal glands: M20; M25; Metal cable gland earthing via metal adapter plates
<b>Switching off</b> On opening the diffuser  Faulty lamp	<b>Optional</b> when opening the fastening mechanism of one of the quick fasteners, voltage to ballast will be switched off all-pole; contacts are positively opening, reconnection when cover and quick fasteners are closed. If lamp is faulty, power supply of lamps is switched off automatically by electronic ballast; when using a 2-channel-ECG power is switched off only to the defective lamp.
<b>Luminous intensity distribution</b>   Version Accuracy class acc. to LitG	<div style="display: flex; justify-content: space-around;"> <div style="text-align: center;"> <p><b>1-lamp, without reflector B21</b></p> </div> <div style="text-align: center;"> <p><b>1-lamp, with reflector B31</b></p> </div> </div> <div style="display: flex; justify-content: space-around; margin-top: 20px;"> <div style="text-align: center;"> <p><b>2-lamp, without reflector B21</b></p> </div> <div style="text-align: center;"> <p><b>2-lamp, with reflector B31</b></p> </div> </div>
<b>Version</b> Accuracy class acc. to LitG	(This row is merged with the previous one for luminous intensity distribution)
<b>Installation note</b> Looping through  Through wiring	There are 2 M25 x 1,5 cable entries on the connection side for looping through of connection cable (entry and exit on one side). Fittings can be supplied with internal through-wiring. Entry and exit holes for connection cables are positioned on opposite sides. A through-wiring kit can be fitted after manufacture (see accessories). Terminals: See technical data top Wiring cross-section: 2,5 mm <sup>2</sup> for max. 16 A
<b>Mounting</b> Standard Special	2 x M8 inserts in enclosure Mounting grooves in housing to accommodate bracket fitting and ceiling rails for variable light installation. Variable mounting distances of light fittings; see dimension drawings



The right is reserved to make alterations to the data, dimensions, weights, design and delivery terms.  
 The drawings are not binding.

## Emergency Light Fittings for Fluorescent Lamps Zone 1&2, Zone 21 and Zone 22 Series ECOLUX 6608

### Selection table

Version	Lamp	Lamp control	Ordering code	Weight [kg]
<b>ECOLUX 6608</b>	2 x 18 W	2-channel	<b>6608/522 -9□□7-2□□□</b>	6,5
Zone 1&2, Zone 21, Zone 22	2 x 36 W	2-channel	<b>6608/542 -9□□7-2□□□</b>	8,0

### Add. to ordering code:

Through wiring	Standard: Without Special: With 4-cores With 6-cores	<b>6608/□□□-□□</b> <b>-□4</b> <b>-□6</b>
Cable entries:	Standard: M 25 x 1,5 1 cable lead-in 2 dummy plugs Special: M 20 or M 25 made of plastic or metal Plain text specification	<b>6608/□□□-□□1</b>  <b>6608/□□□-□□9</b>
Connection terminal		
Type:	Standard: 4 mm <sup>2</sup> screw-type terminal Special: Caged tension terminal max. 2.5 mm <sup>2</sup> Screw terminals max. 6 mm <sup>2</sup>	<b>6608/□□□-□□□□-□3</b> <b>6608/□□□-□□□□-□2</b> <b>6608/□□□-□□□□-□1</b>
Number:	Standard: 4-pole (L1, L', N, PE) Special: 6-pole (L1, L2, L3, L', N, PE)	<b>6608/□□□-□□□□-□□4</b> <b>6608/□□□-□□□□-□□6</b>
Switching off		
When opening the lamp	Standard: Without Special: With 8080 switch, 2-pole	<b>6608/□□□-□□□□-□□□0</b> <b>6608/□□□-□□□□-□□□1</b>

**Note:** The lamps are supplied without fluorescent lamps and installation parts.  
These parts must be ordered separately as accessories!

# Emergency Light Fittings for Fluorescent Lamps Zone 1&2, Zone 21 and Zone 22 Series ECOLUX 6608

# 7



Technical data					
Design	2 x 18 / 20 W or alternatively 2 x 36 / 40 W, electronic ballast with integrated emergency light electronic hardware in a continuous circuit or switchable continuous circuit				
Explosion protection	<table border="1" style="width: 100%; border-collapse: collapse;"> <tr> <td style="width: 50%; text-align: center;">  II 2G EEx edm II T4                 </td> <td style="width: 50%; text-align: center;">  II 2D EEx T80 °C                 </td> </tr> </table>	II 2G EEx edm II T4	II 2D EEx T80 °C		
II 2G EEx edm II T4	II 2D EEx T80 °C				
Test certificate	CQST Ex.... (applied for)				
Rated voltage	AC: 220 V – 10% ... 254 V + 6%; 50 Hz / 60 Hz				
Lamp fitting	2 x 18 / 20 W, 2 x 36 / 40 W				
Protection class	I (with internal PE terminal)				
Ambient temperature					
Standard operation	– 20 °C ... + 50 °C				
Battery operation	– 5 °C ... + 50 °C charge – 20 °C ... + 50 °C discharge				
Connection facility	Connection terminals L1, L2, L3, N, PE, L' for 4 mm <sup>2</sup> fine-wire / single-wire; 2 x 2.5 mm <sup>2</sup> fine-wire / single-wire L' = charging phase, must not be switched				
Wiring	Lamps available with internal wiring, 4- or 6-core; Cross-sectional area 2.5 mm <sup>2</sup> for max. 16 A				
Wire lead-ins					
Standard	Connection side: 1 M 25 x 1.5 screw connection and 1 M 25 x 1.5 dummy plug;				
Special	Opposite side: 1 M 25 x 1.5 dummy plug M20 made of plastic or metal				
Material					
Housing	Polyester resin, fibreglass reinforced, colour white, similar to RAL 9010				
Diffuser cover	Polycarbonate, shock-resistant, aromatic-resistant lacquer possible				
Sealing	Foam polyurethane sealing in the diffuser cover				
Quick-action fasteners	Polyamide, fibreglass reinforced				
Installation parts	Polyester resin, fibreglass reinforced, white, similar to RAL 9010				
Degree of protection	IP 66 / IP 67				
Cover fasteners	Quick-action fasteners to be opened using a screwdriver; Diffuser cover can be swivelled by means of a hinge				
Light deflection					
Standard	Broad reflective inner surfaces of the lamps are lacquered white. Colour: Signal white RAL 9003; lateral glare is limited by the lamp diffuser cover.				
Special	Auxiliary reflector (easily mountable), narrow-angle / wide-angle shining, aluminium anodised and polished.				
Switching off	Optional				
When opening the diffuser cover	When opening the closure mechanism on one of the quick-action fasteners, the voltage to the ballast is switched off at all poles; The contacts of the switching element are forced-opening contacts, switch-on again when lamp diffuser cover and quick-action fastener are closed.				
In the case of a lamp defect	In the case of a lamp defect, the electronic ballast automatically switches the power supply of the defective lamp off.				
Lamp design	<table border="1" style="width: 100%; border-collapse: collapse;"> <tr> <td style="width: 50%;">2-lamp</td> <td style="width: 50%;">2-lamp</td> </tr> <tr> <td style="border-top: 1px solid black;">without a reflector</td> <td style="border-top: 1px solid black;">with a reflector</td> </tr> </table>	2-lamp	2-lamp	without a reflector	with a reflector
2-lamp	2-lamp				
without a reflector	with a reflector				
Class in accordance with LitG	<table border="1" style="width: 100%; border-collapse: collapse;"> <tr> <td style="width: 50%;">B21</td> <td style="width: 50%;">B31</td> </tr> </table>	B21	B31		
B21	B31				
<b>Battery unit</b>					
In the lamp					
Design	NiCd battery, gas-tight				
Capacity	7 Ah				
Operating voltage	6 V				
Changing the battery unit	Open the housing; After loosening two screws, the battery unit can be removed from the housing.				



## Emergency Light Fittings for Fluorescent Lamps Zone 1&2, Zone 21 and Zone 22 Series ECOLUX 6608

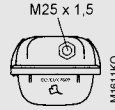
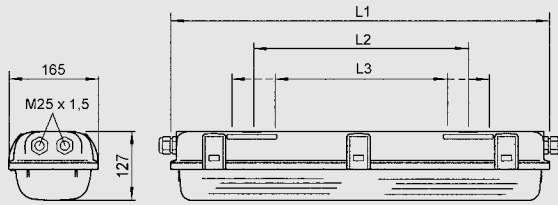
Technical data (continued)			
<b>Emergency light electronics</b>		Integrated in a housing together with the electronic ballast	
Designs	The emergency light electronics are designed for: Continuous circuit or continuous circuit with switchable emergency light blocking mechanism		
Radio noise suppression	In accordance with DIN EN 55 015		
Function test	Weekly verification of the emergency light function; Battery errors and lamp defects are pinpointed and indicated via the red LED.		
Emergency light lighting-duration test	Automatic emergency light lighting-duration test function integrated in the lamp; Deactivation of the function: Insert jumper between terminals 9 and 12 Activation of the function: Remove jumper between terminals 9 and 12 If the jumper on terminals 9 and 12 is removed, then the test function is activated as soon as the lamp is connected to the mains; a built-in timer function reruns the necessary tests at intervals of 3 months using the following test: The lamp is operated in emergency light mode over 2/3 of the nominal operation time; if the lamp is switched off via the low-discharge protection mechanism before the elapse of this time, then the battery unit is no longer suitable for utilisation in emergency light systems; this is indicated via the red LEDs.		
Function displays	1 red light-emitting diode and 1 green light-emitting diode; integrated in the reflector sheet metal plate; discernible from the outside through the lamp diffuser cover		
Displays	LED	Display	Function
	Green	On	Charging current is flowing, everything ok
		Blinking 1 : 1	Automatic lighting-duration test is running
		Blinking 1 : 10	Automatic function test is running
	Red	On	Emergency light lighting-duration test not passed; change of battery necessary
		Blinking 1 : 1	Battery discharged; not ready for operation
		Blinking 1 : 10	Battery defective
Operating types	On delivery, the lamp fitting is wired in a continuous circuit; via removal of the jumper on the terminals 1 and 2 of the emergency light electronic hardware and connection of a remote switch F, the lamp fitting is converted to continuous circuit with switchable emergency light blocking mechanism.		
Continuous circuit (function)			
Continuous circuit with switchable emergency lighting (function)			
Battery charging	Current-regulated constant-current charging, duration 20 h, thereafter changeover to trickle charging.		
Low-discharge protection	When $U_{\text{batt}} = 1 \text{ V} / \text{cell}$ (3 V); the emergency light automatic mechanism switches off the lamp automatically (DIN VDE 0108)		
Emergency light operating duration	Battery capacity	Emergency light operating duration	
	7 Ah	1,5 h / 3 h	
Switching voltage	From mains to battery operation	For $U < 0.6 \times U_N$	
	From battery to mains operation	For $U > 0.9 \times U_N$	
Light power during emergency light operation	Emergency light operating duration	Emergency light lighting power	
	1,5 h 3 h	18 / 20 W	36 / 40 W
		90%	45%
		45%	25%





## Light Fittings for Fluorescent Lamps for Use in Zone 1&2, Zone 21, Zone 22 Series ECOLUX 6600/6608

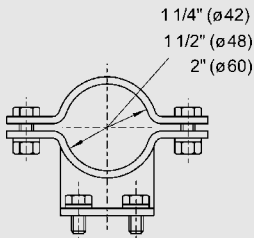
Dimension drawings (all dimensions in mm)



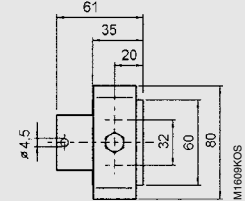
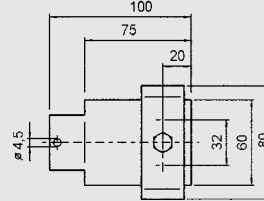
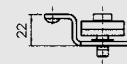
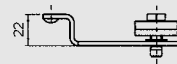
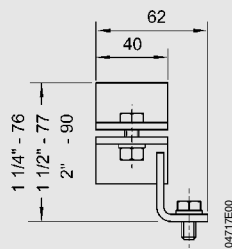
Dimensions	Light fitting 18/20 W	36/40 W	58/65 W
L1	700	1310	1610
L2 <sup>1)</sup>	400	800	800
L3 <sup>2)</sup>	340 ... 460	680 ... 920	795 ... 1030

- 1) fixed mounting distance  
2) variable mounting distance

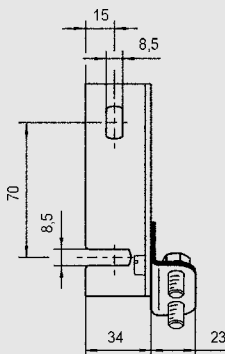
### Light fitting Series 6600, 18 W, 36 W, 58 W



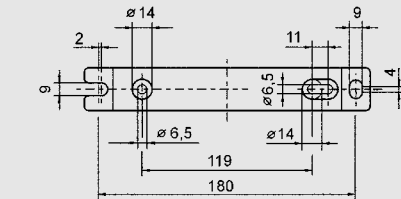
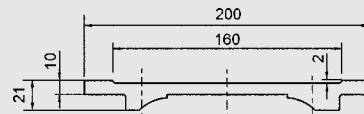
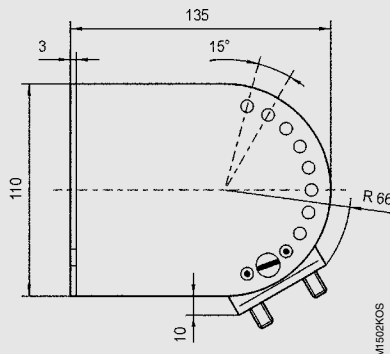
Pipe clamp



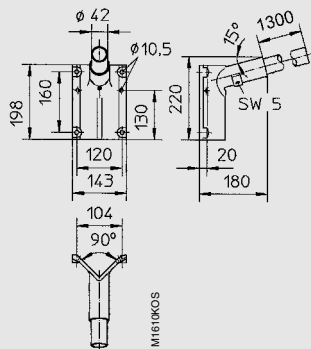
Mounting set grid cable rack



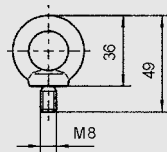
Ceiling and wall-mounting bracket



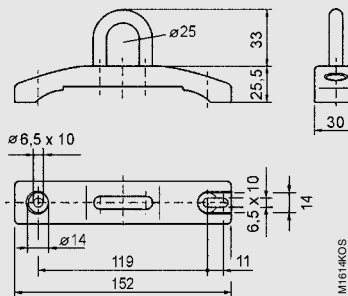
Ceiling mounting bracket



Wall mounting bracket  
for pole-mounting version



Ring bolt



Mounting clamp bracket

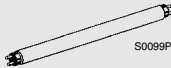
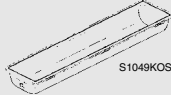
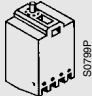
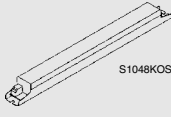
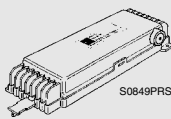
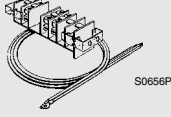
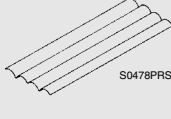
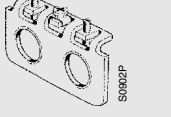
### Mounting accessories



## Light Fittings for Fluorescent Lamps for Use in Zone 1&2, Zone 21, Zone 22 Series ECOLUX 6600/6608


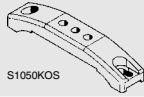
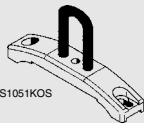

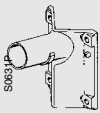
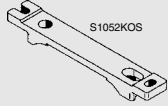
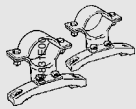
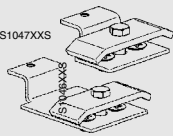



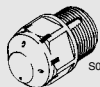
# 7

STAHL

Accessories and spare parts						
Designation	Illustration	Description	Ordering code	Weight [kg]		
Fluorescent lamp		Two pin $\varnothing$ 26 mm Colour of light: Universal-white				
		L 18 W/25                      1100 lm	<b>461 722 0</b>	0,10		
		L 36 W/25                      2600 lm	<b>461 721 0</b>	0,20		
		L 58 W/25                      4100 lm	<b>461 720 0</b>	0,25		
Diffuser		For light fitting				
		18/20 W	<b>66 000 01 05 0</b>	1,20		
		36/40 W	<b>66 000 02 05 0</b>	2,12		
		58/65 W	<b>66 000 03 05 0</b>	2,70		
Switch		Switch	8080/1-3-L 20e	<b>80 800 06 60 0</b>	0,025	
Ballast		FBT-218HTS	2-channel	<b>365 768 0</b>	1,60	
		QTIS-B 2 x 18 W	1-channel	<b>365 771 0</b>	0,35	
		FBT-236HTS	2-channel	<b>365 769 0</b>	1,60	
		QTIS-B 2 x 36 W	1-channel	<b>365 772 0</b>	0,35	
		FBT-258HTS	2-channel	<b>365 770 0</b>	1,60	
		QTIS-B 2 x 58 W	1-channel	<b>365 773 0</b>	0,35	
		Corrosion-resistant for outdoor use				
		6442/721-2	1 x 18 W, 1-channel	<b>64 420 02 01 0</b>	1,70	
		6442/722-2	2 x 18 W, 1-channel	<b>64 420 05 01 0</b>	1,70	
		6442/723-2	2 x 18 W, 2-channel	<b>64 420 08 01 0</b>	1,70	
		6442/741-2	1 x 36 W, 1-channel	<b>64 420 03 01 0</b>	1,70	
		6442/742-2	2 x 36 W, 1-channel	<b>64 420 06 01 0</b>	1,70	
		6442/743-2	2 x 36 W, 2-channel	<b>64 420 09 01 0</b>	1,70	
		6442/761-2	1 x 58 W, 1-channel	<b>64 420 04 01 0</b>	1,70	
		6442/762-2	2 x 58 W, 1-channel	<b>64 420 07 01 0</b>	1,70	
		6442/763-2	2 x 58 W, 2-channel	<b>64 420 10 01 0</b>	1,70	
Mounting kit for through wiring		For later installation into standard-light fitting				
		DV3, tension clamp terminals	18 W/20 W	<b>66 008 10 87 0</b>	0,10	
		3 x 2,5 mm <sup>2</sup> , max. 16 A	36 W/40 W	<b>66 008 11 87 0</b>	0,15	
		terminal marking: L1 + N + PE	58 W/65 W	<b>66 008 12 87 0</b>	0,20	
		DV5, tension clamp terminals	18 W/20 W	<b>66 008 07 87 0</b>	0,15	
		5 x 2,5 mm <sup>2</sup> , max. 16 A	36 W/40 W	<b>66 008 08 87 0</b>	0,25	
		terminal marking: L1 + L2 + L3 + N + PE	58 W/65 W	<b>66 008 09 87 0</b>	0,30	
		DV3, screw terminals	18 W/20 W	<b>66 008 04 87 0</b>	0,20	
		3 x 2,5 mm <sup>2</sup> , max. 16 A	36 W/40 W	<b>66 008 05 87 0</b>	0,25	
		terminal marking: L1 + N + PE	58 W/65 W	<b>66 008 06 87 0</b>	0,30	
		DV5, screw terminals	18 W/20 W	<b>66 008 01 87 0</b>	0,25	
		5 x 2,5 mm <sup>2</sup> , max. 16 A	36 W/40 W	<b>66 008 02 87 0</b>	0,35	
		terminal marking: L1 + L2 + L3 + N + PE	58 W/65 W	<b>66 008 03 87 0</b>	0,40	
Reflectors		For later installation, broad deep-beam				
		For 1-lamp light fittings	18 W/20 W	<b>60 309 03 58 0</b>	0,08	
			36 W/40 W	<b>60 309 04 58 0</b>	0,18	
			58 W/65 W	<b>60 309 06 58 0</b>	0,22	
		For 2-lamp light fittings	18 W/20 W	<b>60 309 01 58 0</b>	0,12	
			36 W/40 W	<b>60 309 02 58 0</b>	0,26	
		58 W/65 W	<b>60 309 05 58 0</b>	0,32		
Adaptor plates		For earth continuity when metal glands are used				
		1 x M20 x 1,5	<b>60 008 15 55 0</b>	0,07		
		1 x M25 x 1,5	<b>60 008 16 55 0</b>	0,07		
		1 x NPT 1/2"	<b>60 008 17 55 0</b>	0,07		
		1 x NPT 3/4"	<b>60 008 18 55 0</b>	0,07		
		2 x M20 x 1,5	<b>60 008 19 55 0</b>	0,06		
		2 x M25 x 1,5	<b>60 008 20 55 0</b>	0,06		
		2 x NPT 1/2"	<b>60 008 21 55 0</b>	0,06		

## Light Fittings for Fluorescent Lamps for Use in Zone 1&2, Zone 21, Zone 22 Series ECOLUX 6600/6608

### Accessories and spare parts

Designation	Illustration	Description	Ordering code	Weight [kg]
Lampholder		Lampholder for 2-pin lamps G13	<b>385 613 0</b>	0,05
Mounting rail		For variable mounting distance 1 pair	<b>66 008 01 75 0</b>	0,32
Mounting clamp rail		Clamp mounted to mounting rail for variable mounting distance 1 pair	<b>66 008 02 75 0</b>	0,10
Ring bolts M8		To mount directly into inserts 1 pair	<b>60 008 03 90 0</b>	0,11
Wall-mounting bracket		For pole-mounting fitting with conduit 1300 mm long, 42 mm dia. (With pipe clamp R1½")	<b>463 749 0</b>	4,0
Ceiling mounting bracket		for ceiling mounting of light fitting 1 pair	<b>66 008 03 75 0</b>	0,28
Pipe clamp		With mounting rail for variable mounting distance; Material: stainless steel R 1¼" (Ø 42 mm) 1 pair R 1½" (Ø 48 mm) 1 pair R 2" (Ø 60 mm) 1 pair	<b>66 008 05 26 0</b> <b>66 008 01 26 0</b> <b>66 008 02 26 0</b>	1,25 1,31 1,40
Mounting set „Grid cable rack“		For grid cable racks, wire diameter 6 mm; with mounting rail for variable mounting distance; Material: stainless steel	<b>66 008 03 26 0</b>	1,20
Ceiling and wall-mounting bracket		With mounting rail for variable mounting distance; Material: stainless steel light fitting adjustable in 15° steps 1 pair	<b>66 008 04 26 0</b>	1,2
Cable entry		in moulded plastic Thread Conductor dia. Packing unit M20 x 1,5 6 ... 13 mm 1 piece 50 piece M25 x 1,5 7 ... 17 mm 1 piece 50 piece	<b>81 610 77 01 0</b> <b>81 610 25 03 0</b> <b>81 610 78 01 0</b> <b>81 610 26 03 0</b>	0,012 0,600 0,017 0,850
Plugs		in moulded plastic Thread Packing unit M20 x 1,5 1 piece 100 piece M25 x 1,5 1 piece 100 piece	<b>82 900 08 59 0</b> <b>82 900 45 59 0</b> <b>82 900 09 59 0</b> <b>82 900 46 59 0</b>	0,006 0,600 0,006 0,600
Breathing gland		For installation in light fittings; in moulded plastic; without locknut Thread: M25 x 1,5 1 piece 20 piece	<b>81 620 01 02 0</b> <b>81 620 02 02 0</b>	0,010 0,200

STAHL

STAHL

R. STAHL Ex-proof(Shanghai) Co., Ltd

Unit D, 9th Floor, Building No.4, 889 Yishan Road, Shanghai, China - Tel + 86 21 6485 0011 - Fax + 86 21 6485 2954

Internet: <http://www.stahl.de>